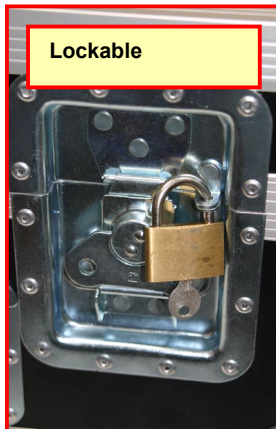


ACCESORIES FOR: PFS,PFS-A-SL

Service Cart

Often our customers have asked us for a safe, handy and economical storage accommodation for M&W equipment.

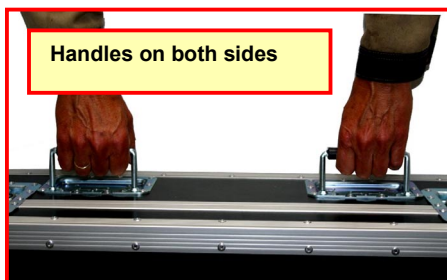
Now we can offer this Service Cart that will pass through a door opening and fit into a narrow elevator. The large wheels allow for easy pass over grating floors and doorsteps.



Lockable



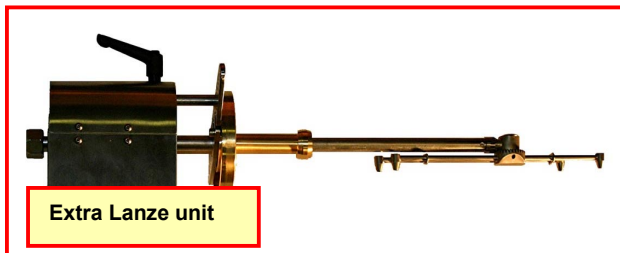
Corner protection



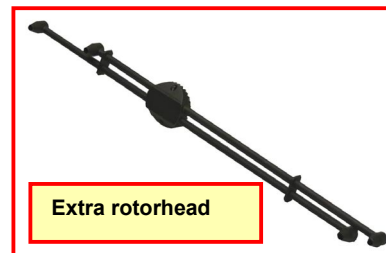
Handles on both sides

Technical specifications for Service Cart

	Length	Whith	Heigth
Box:	940mm(37")	680mm(27")	300mm(12")
Box & Cart:	1120mm(44")	680mm(27")	590mm(23")
Pneumatic Tire size:	260X85 mm (3.00X4")		
Weight incl. Instruments:	47 kg. (94 lb.)		
Standard accomodation:	1 Pc. DAP		
	1 Pc.PFS-A		
	1 Set of cables		
	10 Pc. Sample bottles		



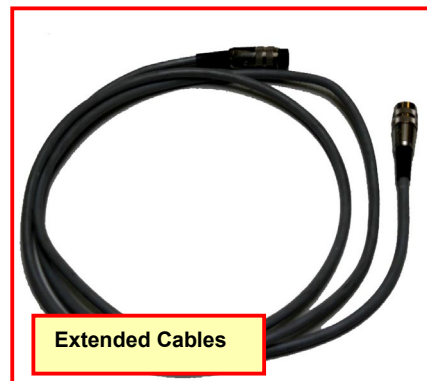
Extra Lanze unit



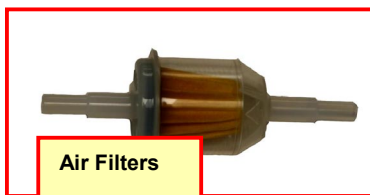
Extra rotorhead



Extended hoses



Extended Cables



Air Filters



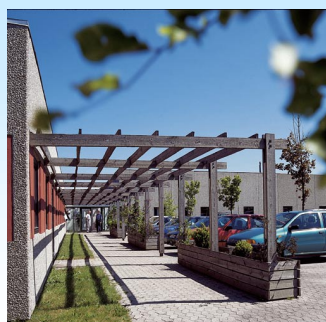
Sample Bottle

The Company and its product line

M&W is an internationally working engineering company specialized in the design, manufacturing and supply of analysing and sampling systems for optimising processes and controlling by-products in coal-fired power plants and other utility boilers world-wide.

M&W 's product line

- Pulverized Fuel Sampler (PFS) +(PFS-A)+(PFS-A-SL)
- Dirty Air Pitot (DAP)+(DAP-SL)
- Dustless Connection (DC)+DC-SL)
- Automatic Coal Flow Monitor (ACFM)
- Automatic Trimming Damper (ATD)
- Automatic Dust Sampler (ADS)
- Residual Carbon Analyser (RCA)
- Fly-Ash Sampler (FAS)
- Raw Coal Sampling Systems (RCS)



M&W ASKETEKNIK APS



ENGINEERING AND PRODUCTION
Member of the Mark & Wedell Group
Oldenvej 5, DK-3490 Kvistgaard, Denmark
Tel.: +45 49 13 98 22 Fax: +45 49 13 91 62
Internet: www.m-w.dk E-mail: m-w@m-w.dk