

TWIN-ROLL CRUSHER

TYPE VK-18



Twin-roll Crusher Type VK-18/30

The **Twin-roll Crusher** is used for crushing of hard and brittle material like coal, cement, clinker, slag, concrete and granite from a maximum particle size of 50 mm to a minimum particle size of 5 mm, subject to material characteristics.

General Description:

The material to be crushed is fed into the top of the crusher, which acts as an integrated feed hopper. The crushing takes place between two rollers of which one is rotating clockwise and the other one counter clockwise. The speed of the two rollers is asynchronous in order to establish a cleaning effect of the crushing chamber.

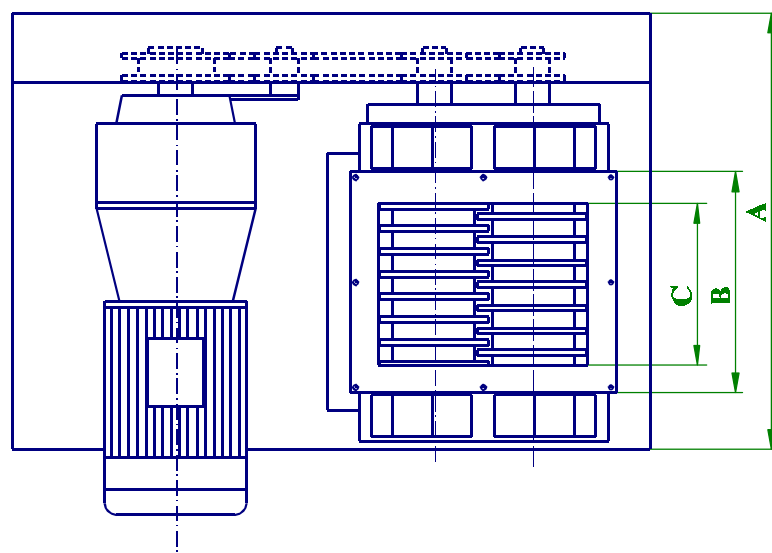
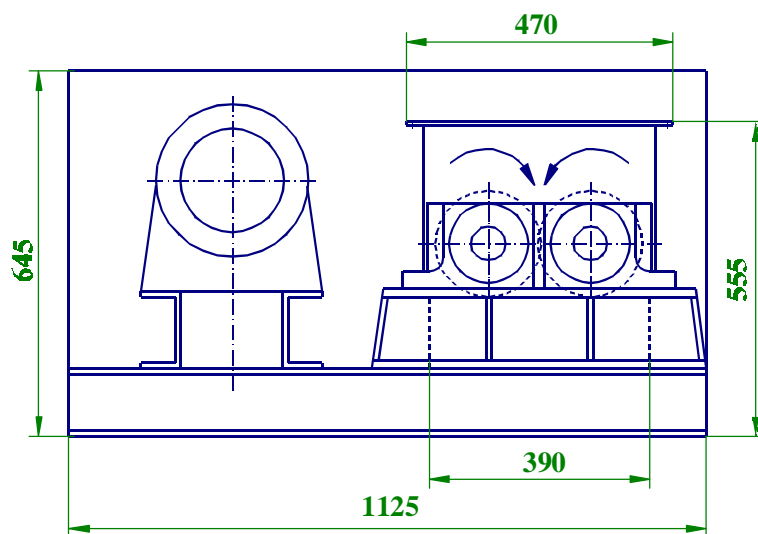
The rollers consist of crusher rings and spacer rings mounted staggered, so that a crusher ring from one roller rotates against a spacer ring from the opposite roller. The gap between the rollers is adjustable to allow for possible wear.

The crusher is of very sturdy design built up from heavy steel plates and profiles and lined with special wear resistant lining plates.

The crusher and spacer rings are manufactured from special steel and induction hardened to give special hard and wear resistant surfaces.

The rollers rotate in heavy duty roller bearings mounted in dust proof bearing blocks. The rollers are driven by a heavy duty duplex chain from a geared motor. The chain is constantly kept tight by a chain tightener.

The gear shaft sprocket wheel is provided with safety bolts for overload protection.



Drive: Geared motor and Heavy Duty duplex chain drive.
Voltage: 3 x 400 V, 50 Hz.

Crusher type	A	B	C	Motor size kW	Weight kg
VK 18/30	770	310	285	7.5	660
VK 18/60	1070	610	585	11	830



M&W JAWO HANDLING AS



ENGINEERING AND PRODUCTION
 Member of the Mark & Wedell Group
 Oldenvej 5, DK-3490 Kvistgaard, Denmark
 Tel.: +45 49 13 98 22 Fax: +45 49 13 91 62
 Internet: www.m-w.dk E-mail: m-w@m-w.dk