

CROSS BELT HAMMER SAMPLER TYPE HP



The **Cross Belt Hammer Sampler** is designed to take out a representative sample of powdered material and lumps up to 200 mm, from the material on an operating rubber belt conveyor without stopping the belt.

General Description:

The Cross Belt Hammer Sampler pivots on an axis parallel to the centreline of the belt. As the hammer traverses in a rotary motion the full width of the belt, the leading edges of the side plates will cut out, and the back plate will push off, the sample, which will be a complete cross-section of the material stream.

Fines will tend to be segregated at the bottom of the material on the belt. In order to avoid selective sampling the belt curvature can be properly adjusted to the arc of the side plates. Also, the gap between the belt and the back plates can be adjusted to the minimum required to safeguard against direct contact and consequential damage to the belt. In addition the back plate is fitted with brush and resilient skirts to sweep off the bottom layer of the material.

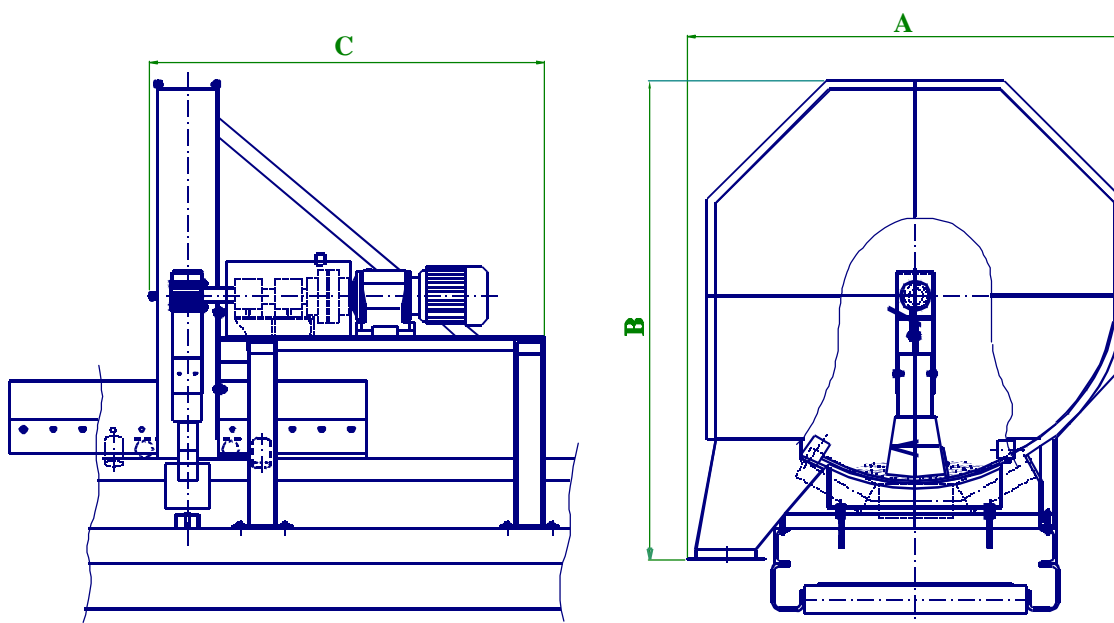
The profile of the conveyor belt is therefore formed to suit the curvature of the path of the hammer, so that all fines, which constitute part of the sample, are collected from the belt.

The hammer is available in S235 JRG2 or stainless steel depending upon the material to be sampled.

The plate cover around the hammer is available in painted S235 JRG2 , hot dip galvanized S235 JRG2 or stainless steel depending upon the material to be sampled.

The steel structure is painted or in hot dip galvanized S235 JRG2 profiles.

The control of the sampler is normally conducted from a local control system, which can be connected to a central PLC-system.



Drive: Helical geared motor with brake and coupling

Voltage: 3 x 400 V, 50 Hz

Type of Cross Belt Hammer Sampler: HP xxx = Belt Width in mm	A: mm	B: mm	C: mm	Motor Size
HP 500	1400	1650	1600	2.2 kW
HP 650	1550	1700	1600	2.2 kW
HP 800	1700	1750	1600	2.2 kW
HP 1000	1900	1850	1800	3.7 kW
HP 1200	2100	1950	1800	3.7 kW
HP 1400	2300	2050	2000	5.5 kW
HP 1600	2500	2150	2000	5.5 kW



M&W JAWO HANDLING AS



ENGINEERING AND PRODUCTION
 Member of the Mark & Wedell Group
 Oldenvej 5, DK-3490 Kvistgaard, Denmark
 Tel.: +45 49 13 98 22 Fax: +45 49 13 91 62
 Internet: www.m-w.dk E-mail: m-w@m-w.dk