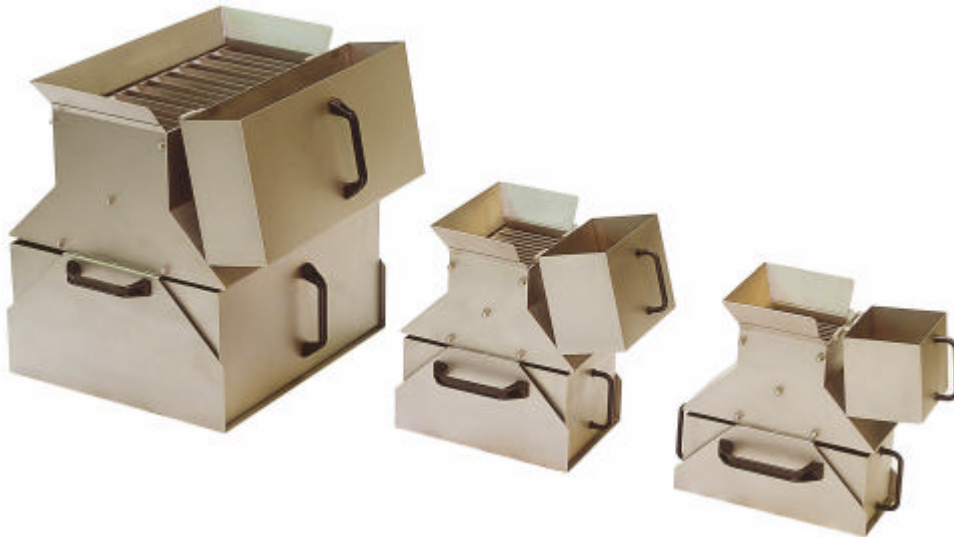


RIFFLE DIVIDER TYPE RF



The **Riffle Divider Type RF** is designed for manual representative dividing of dry, granulated and powdered sample material.

General Description:

The Riffle Dividers, type RF are used for the easy dividing and reduction of bulk material samples with particle sizes ranging from less than 1 mm up to a maximum of 10 mm. After a representative sample extraction has been effected, further reduction is the major prerequisite for exact analysis results in accordance with the characteristics of the bulk quantity. Due to its special sampling method, the Riffle Dividers provide an accuracy which is superior to all other manual procedures. Higher accuracy can only be obtained with mechanical dividers such as the rotary tube divider Type PD.

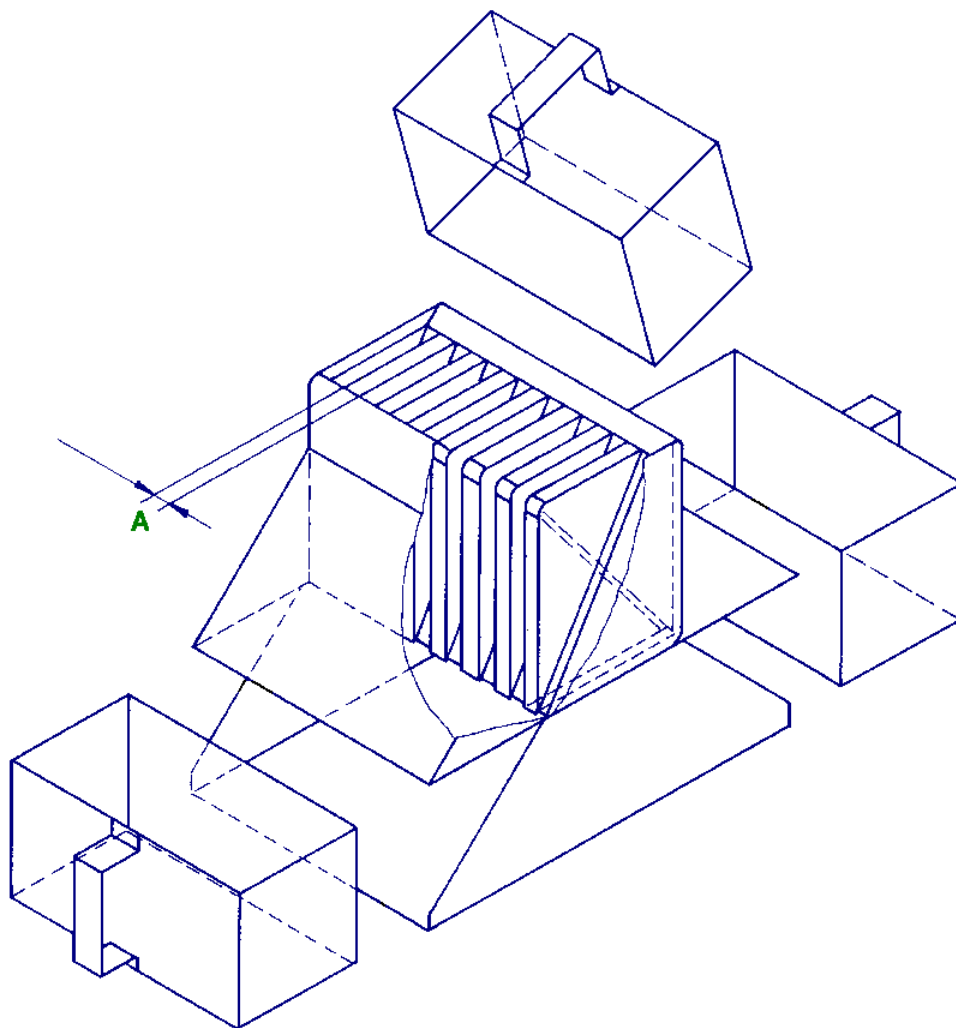
The sample material cascades into the two collecting receptacles through a number of slots, which are arranged opposite to each other. With each dividing process, the feed quantity is halved until the required sample quantity has been reached.

Riffle dividers are particularly suitable for field use since they can be operated independent of electrical or mechanical energy sources.

The appropriate type of Riffle Dividers is selected according to existing standards and regulations, if available, and the maximum particle size which determines the required width of the slots in the dividing head. Depending on material, maximum particle size and mass percentage thereof, the slot opening shall be 1.5 to 3.5 times the diameter of the largest particle.

Features and advantages:

- Quick, simple dividing even with difficult bulk materials
- Each dividing process will halve the feed sample quantity
- Almost any sample quantity can be obtained with repeated dividing
- Wide application range in the field or in laboratory
- Operates independently of mechanical or electrical supply sources
- Easy cleaning and no maintenance required (no moving parts)
- Most accurate method of manual dividing



Riffle Divider Type	Number of cells	Particle size In mm	Slot width (A) in mm	Container volume in dm ³	Weight in kgs
RF 12/10	10	<4	12	2	5
RF 15/12	12	<5	15	4	7.5
RF 20/16	16	<7	20	8	27
RF 30/16	16	<10	30	15	34



M&W JAWO HANDLING AS



ENGINEERING AND PRODUCTION
 Member of the Mark & Wedell Group
 Oldenvej 5, DK-3490 Kvistgaard, Denmark
 Tel.: +45 49 13 98 22 Fax: +45 49 13 91 62
 Internet: www.m-w.dk E-mail: m-w@m-w.dk